



---

# COALMINE CAMP

**OPERATED BY BCHBC  
NORTHWEST CHAPTER**

[JOIN OUR FACEBOOK GROUP](#)

---

**PRESERVING & ENHANCING ACCESS AND USE OF  
PUBLIC LAND FOR ALL EQUESTRIANS**

[BCHORSEMEN.ORG](http://BCHORSEMEN.ORG)

# ABOUT COALMINE CAMP

[Watch the Camp Video](#)

## History

In 2013, the BCHBC-NW began searching for a camping and staging area that club members could use for club events, and riding activities.

In 2017, a site was identified on the banks of the Goat Horn Creek 10 km Southwest of Telkwa.

70 years ago the site was a coal mine processing area. The removal and salvage of one old structure left us with a clean slate for developing the area for our club.


The land is owned by a Telkwa Coal Inc. who generously allows us to develop the area for long-term equine use.

## Development

With the help of a several Grants and endless volunteer hours, we have developed the site to a point that it contains:

- An arena with horse Shelter
- A cabin/clubhouse with solar power, water, attached picnic shelter and shower structure.
- Perimeter and cross fencing.
- 14 campsites complete with corrals and running water.
- Skill development training course
- 2 outhouses
- A network of trails offering a variety of durations and difficulties.

Over the next few years we expect to continue to enhance the camp through construction of cabins, horse shelters, and many more trails.



Established in 1999, the Northwest Chapter has members covering the BC Northern Interior from Fraser Lake to the Kispiox to the Southside.

[More Details on the Chapter Page](#)



# DIRECTIONS

Thanks for your interest. We look forward to seeing you in camp and on the trail.

Telkwa is 370 km (4 hours) west of Prince George on Highway 16. When entering Telkwa from the east you will drive down a winding hill. Turn left onto Hankin Ave ( towards the River ) at the bottom of the hill. Continue across the bridge, and across the railroad tracks. At this point, the road becomes Telkwa Coalmine road. Continue on this road for 6 km. Take the left fork. This is still called Coalmine road. Follow this road another 4 km. You will pass through a rough sand pit, then proceed down the hill on a fairly good dirt road. At the bottom of this hill, Coalmine Camp is on the right.



# RULES, POLICIES, ETIQUETTE

Having good camp etiquette can have many positive impacts on the overall organization.

**Members & Guests:** Coalmine Camp is intended for use by Backcountry Horsemen of BC members and sponsored guests. Sponsors of junior members and guests, should be present while juniors and guests are in camp, and will be responsible for the safety and behaviour of those they sponsor. The designated camp host or the executive committee may allow exceptions.

**Camping:** All sites are on a first come, first served basis. If you have questions, ask the host. Set up only at established sites unless agreed by host. In general, set up and use your camp in a way that minimizes negative affects on other campers. Run generators only when it will not negatively affect other campers. Keep your campsite tidy.

**Dogs:** Well behaved dogs are welcome in camp. Examples of poor dog behaviour include excessive barking, harassing/annoying horses, other dogs, or people and/or aggressive behaviour. Some people are frightened by dogs. It is the owners responsibility to prevent the dog from causing concern or disruption. Dogs showing repeated bad behaviour will be banned from camp. Dogs are not welcome near the clubhouse/cabin during group use (Meals, meetings, etc). If you want to take your dog along on a ride, be sure all other riders are aware and agree beforehand.

**Horses:**

- Horses are the responsibility of the owner.
- Horses may not be left unattended overnight. (Someone at camp must be responsible for every horse )
- All Campsites have corrals.
- Other camp facilities/areas may be used for horses on a first come first serve basis, providing it does not interfere with the designated use. Eg. -Horses may pasture in the skills development area if it is not being used for training.
- Horses may graze in any area if they do not conflict with campers or other horses.
- Manure cleanup must occur immediately after the use of any area is concluded.
- Manure may be left at the collection sites.
- Leftover/waste hay must be disposed of in the compost site.

# CONTRIBUTIONS & DONATIONS

If we all do a little, we can do a lot!

**Contributions:** Backcountry Horsemen of BC is a volunteer organization. The camp, everything in the camp, and all activities are a result of volunteer effort. While all BCH members are welcome to use the camp, all members have an obligation to contribute to the effort it takes to build, maintain, and operate the camp. A list of items that require volunteer work is posted at the cabin, or, ask the camp host how you can help. If members are unable to volunteer time, a monetary contribution will help with ongoing camp costs. There is a donation box and a list of suggested donation rates below.

## Suggested Donations:

While there is no charge for use of Camp facilities, there are ongoing maintenance and upkeep costs. Your help in keeping the camp's status as "no fee" is appreciated. Kindly, choose one of the following payment methods as a guide:

- 1 Horse-based  
\$10/horse/day
- 2 Camper-based  
\$10/person/day
- 3 Site based  
\$20/site/day





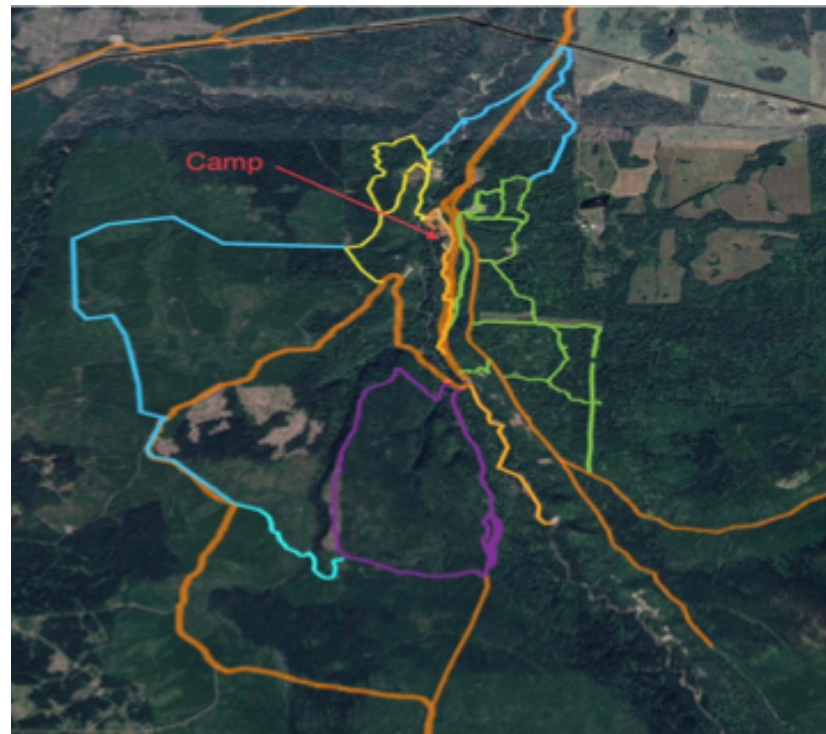
# TRAIL SYSTEM

Our network of trails utilize the camp as a staging area. Rides range from ½ hour to 6 hours in duration over a variety of conditions and levels of difficulty.

**Rides:**

The Back Country Horsemen Provincial “best practices “ rules apply to all sanctioned rides, and are encouraged for non-sanctioned rides.

Ensure someone knows your intended trail/route/timing. This not only addresses safety concerns but helps others plan their own rides. The whiteboard at the cabin can be used to leave this information.



Additionally, there are several “destination” type rides that access the alpine within a short drive from camp.

# BCHBC RIDE PROTOCOL

THE RIDE MASTER IS IN CHARGE OF THE RIDE AT ALL TIMES.

1. The Ride Master takes attendance at the beginning and end of the ride ensuring all riders are accounted for.
2. The Ride Master will assign a Drag Rider to ride behind the group and assist riders in the back. Depending on the size of the group, flank riders may also be assigned at the discretion of the Ride Master.
3. The Ride Master reviews the Pre-Ride safety Checklist (Available on education tab of BCHBC website – titled ‘information for ride master’) with participants before setting out, encouraging Group safety, “treading lightly”, and protection of the trail.
4. The Ride Master will limit the number of riders if, in their judgment, there are too many riders for the trail conditions or safety of the group. The Ride Master will sort ride-out groups as necessary. Groups of 10 or less are recommended for trail safety and minimal trail impact. A Ride Master will be assigned for each group. Each Ride Master should be familiar with the route as well as BCHBC best practices.
5. The Ride Master may reassign positions within the group as they think best in the interest of safety.
6. The Ride Master ensures there is a first aid kit available and packed with each group. Each rider should know who has the kit should someone need help. It is recommended that each rider also carry a personal first aid kit as well. The ride master will ensure everyone is aware of the capabilities of each horse and rider. Eg: inexperienced rider, green or difficult horse. Riders will ensure the Ride Master is aware of individual challenges, eg: green or difficult horse, difficulty mounting.
7. Riders should inform the Ride Master of any special medical issues.
8. The Ride Master leads the ride, or designates a lead rider, setting a pace suitable to the terrain and the participants. It is important to keep the ride flowing smoothly and safely at an even pace. The lead rider should inform following riders when approaching specific hazards. Eg: steep grades, muddy sections, a snag that could catch a leg.  
The following riders can pass the information along.
9. The Ride Master checks with participants and the Drag Rider from time to time to be sure that the group is staying together, that the pace is suitable to all, and initiates ride changes as required. The use of communications devices is advised.
10. The Ride Master may ask members to leave the ride if they or their animals are disruptive or unsafe to themselves or others.

# RIDE PARTICIPANT

YES, YOU HAVE RESPONSIBILITIES TOO

## Before the Ride

1. Pre-register with your Ride Coordinator. Get your information as to location, facilities, trail conditions, etc.
2. Allow enough time to tack and be ready to ride out at the time specified. Your time is not more important than everyone else's. Do not expect others to wait.
3. All BCHBC members that are riding must have current Horse Council membership or a recognized alternate (the Alberta Horse Federation or Canadian Icelandic Horse Federation). This is important to ensure your chapter has appropriate insurance coverage.
4. Your Ride Coordinator will indicate if the ride allows for a guest. Inviting a guest lets you introduce them to BCHBC and see if they are interested in joining. Guests are expected to become members if they wish to continue riding or attending events and should not continue to depend on their host's membership. The exception to this rule would be out of town visitors who are invited as member's guests. It is unrealistic to expect them to purchase a local membership if they are not attending often but do attend occasionally when visiting family/friends who are member. (see exception in 'Riding and Sharing the Trails section').
6. If bringing a guest, you are responsible for ensuring your guest is familiar with trail etiquette and conduct themselves accordingly.
7. Know your horse and your capabilities. Consider the distance of the ride and fitness of your horse. Tell your Ride Master if your horse is struggling for any reason.
8. Normally stallions or dogs are not allowed on sanctioned rides. exceptions should be decided by the Host Chapter. All participants should be aware of exceptions well in advance of the ride and communicated to all members prior to the ride, so they know what to expect.  
At no time are loose horses to be allowed on sanctioned rides.



# RIDE PARTICIPANT

---

## **During the Ride:**

1. No alcohol or other intoxicants while on the trail.
2. Always stay behind your lead rider, unless invited to move ahead.
3. Space yourself, a good rule of thumb is to keep at least one horse's length between you and the horse in front of you by viewing the feet of the horse ahead of you through your horse's ears. When approaching or navigating a difficult section allow more space between you and the horse ahead. If the horse ahead of you goes down, or has other problems, more space may help to avoid to becoming part of the wreck. Example: While descending a steep hill, and the rider in front falls, if you are too close you would quickly become involved.
4. Just as important is to keep up with the herd by not lagging too far behind. If the pace is too fast, tell the Drag rider, who will inform the leader. If you need to drop back or leave the ride, tell your Ride Master.
5. On approaching a steep hill, maintain a good flat walk. Please do not trot or run up hills as this creates erosion and excites horses. If you stop on a steep uphill grade, turn your horse sideways to the slope. This better allows the "climbing muscles" to recover. Before stopping on a steep trail, make sure all horses are in a safe location. Allow plenty of space for all riders to clear a difficult section.
6. Avoid widening the trail and "bush crashing" that may spook other horses and can damage sensitive areas.
7. Horses do not like to be left behind. Please wait for the rider and horse behind you after completing an obstacle so the horse behind does not feel rushed.
8. Doffing or donning a jacket is best done on the ground. Your horse may tolerate this while you are mounted but other horses may react very unpredictably. Think safety.

## RIDE PARTICIPANT

---

9. At water crossings, cross single file. Do not obstruct the crossing by stopping your horse in the crossing. If your horse wants to drink, move to a spot that does not block other riders, or wait until all are across.
10. If a rider dismounts, at least some riders should wait until he/she remounts before moving off.
11. During the ride, you may feel your horse will do better farther up or farther back in the group. When passing, always get permission of the rider you wish to pass. When being passed, keep your horse's head towards (and hindquarters away from) the passing horse.
12. Many horses prefer to be in front or avoid being in back, but please realize that not everyone can be in the position they want each time. Let others have a turn.
13. Tie a red ribbon in your horse's tail if your horse kicks or strikes, and keep their front or hind end away from others. A green ribbon indicates a young or inexperienced horse, pink indicates a mare in heat. If stallions are allowed on the ride, they should be wearing a blue ribbon.
14. Horses may behave differently when around new, un- known horses, so expect the unexpected.
15. Carry a personal first aid kit and any necessary medication. If you have a need for any specific first aid medication, such as an EpiPen's for an allergic reaction, then bring it and make sure the group is aware of your needs and where you are keeping your medications during the Pre-Ride Safety Check.
16. Watch and consider the impact you and your horse have on others. Riders and/or horses that are disruptive or are deemed unsafe by the Ride Master will be asked to leave the ride group. Inconsiderate or unruly behaviour from either horses or riders are not welcome on group rides.